

SC10G

Universal Compressor

R134a

220-240V 50Hz

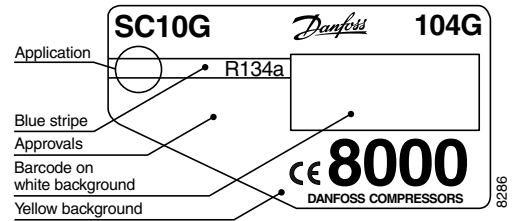
Data Sheet (Replaces CD.44.C5.02)

General

Compressor	SC10G
Code number	104G8000

Application

Application		LBP/HBP
Evaporating temperature range	°C	-35 to 15
Voltage range	V/Hz	LBP: 187 - 254 /50
		LBP: 198 - 254 /60
		HBP: 198 - 254 /50
Motor type		RSIR/CSIR
Max. ambient temperature	°C	43
Comp. cooling at ambient temp.	32°C	LBP: F ₁
		HBP: F ₂
	38°C	LBP: F ₁
		HBP: F ₂
43°C	LBP: F ₁	
	HBP: F ₂	



- S = Static cooling normally sufficient
- O = Oil cooling
- F₁ = Fan cooling 1.5 m/s
(compressor compartment temperature equal to ambient temperature)
- F₂ = Fan cooling 3.0 m/s necessary

Design

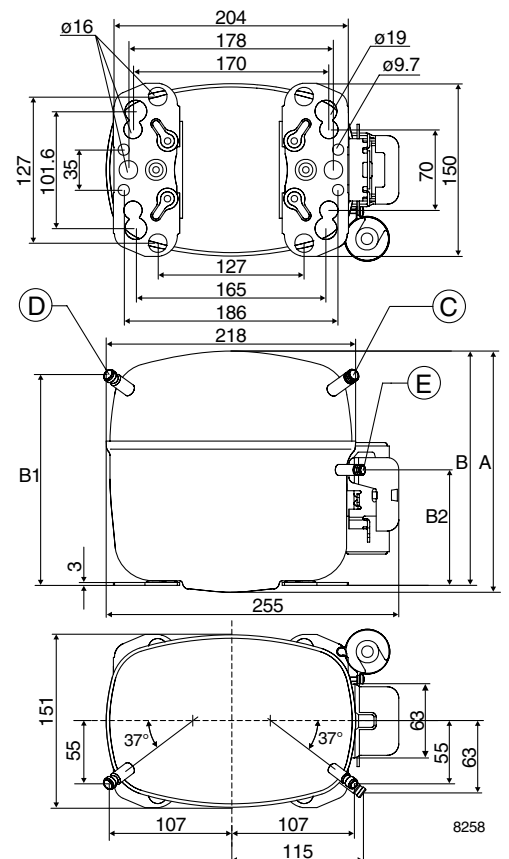
Displacement	cm ³	10.29
Oil quantity	cm ³	550 (500 on comp. with oil cooler)
Maximum refrigerant charge	g	1300
Free gas vol. in compressor	cm ³	1510
Weight without electrical equipment	kg	12.1

Motor

Motor size	watt	250
LRA (rated after 4 sec. UL984) LST/HST	A	10.2/11.1
Cut-in current LST/HST	A	14.6/11.1
Resistance, main and start winding (25°C)	Ω	8.5/14.1
Approvals		EN 60335-2-34

Dimensions

Height	mm	A	199
		B	193
		B1	173
		B2	90
Suction connector	location/I.D. mm	C	8.2 ±0.09
Process connector	location/I.D. mm	D	6.2 ±0.09
Discharge connector	location/I.D. mm	E	6.2 ±0.09
Compressors on a pallet	pcs.		80



Capacity (EN 12900/CECOMAF)

Comp.\°C	-35	-30	-25	-23.3	-20	-15	-10	-5	0	5	7.2	10	15
SC10G	23	60	113	135	183	268	369	486	618	764	833	925	1100

watt

Capacity (ASHRAE)

Comp.\°C	-35	-30	-25	-23.3	-20	-15	-10	-5	0	5	7.2	10	15
SC10G	29	74	139	166	225	331	456	600	764	946	1032	1147	1367

watt

Power consumption

Comp.\°C	-35	-30	-25	-23.3	-20	-15	-10	-5	0	5	7.2	10	15
SC10G	93	139	181	195	220	256	290	322	353	383	396	412	441

watt

Current consumption

Comp.\°C	-35	-30	-25	-23.3	-20	-15	-10	-5	0	5	7.2	10	15
SC10G	1.29	1.34	1.41	1.44	1.50	1.61	1.72	1.85	1.98	2.12	2.18	2.26	2.40

A

COP (EN 12900/CECOMAF)

Comp.\°C	-35	-30	-25	-23.3	-20	-15	-10	-5	0	5	7.2	10	15
SC10G	0.25	0.43	0.63	0.69	0.83	1.05	1.27	1.51	1.75	2.00	2.11	2.25	2.49

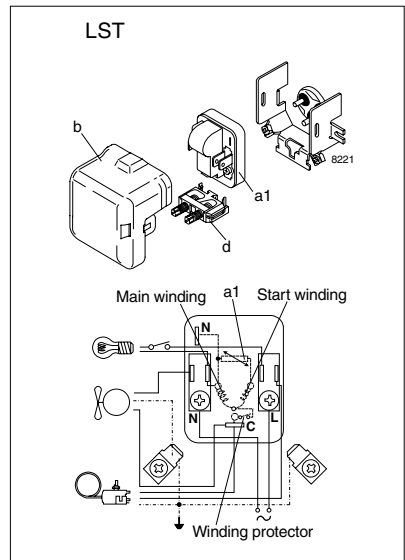
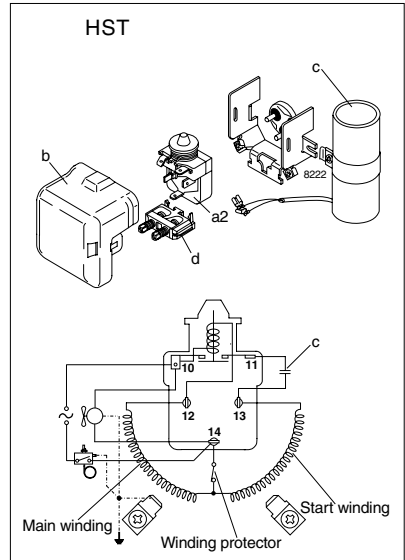
W/W

COP (ASHRAE)

Comp.\°C	-35	-30	-25	-23.3	-20	-15	-10	-5	0	5	7.2	10	15
SC10G	0.31	0.53	0.77	0.85	1.02	1.29	1.57	1.86	2.16	2.47	2.61	2.78	3.10

W/W

Test conditions	EN 12900/CECOMAF	ASHRAE
Condensing temperature	55°C	55°C
Ambient and suction gas temp.	32°C	32°C
Liquid temperature	55°C	32°C
Fan cooling, 220V 50Hz		



Accessories

Devices		Fig.	SC10G
PTC starting device	6.3 mm spades	a1	103N0002
Starting relay		a2	117U6002
Cover		b	103N2009
Starting capacitor 80 µF		c	117U5017
Cord relief		d	103N1004
Mounting accessories			
Bolt joint for one compressor			118-1917
Bolt joint in quantities			118-1918
Snap-on in quantities			118-1919