

FR6G

Universal Compressor

R134a

220-240V 50Hz

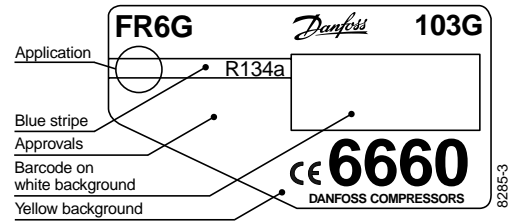
Data Sheet (Replaces CD.43.I5.02)

General

Compressor	FR6G
Code number	103G6660

Application

Application		LBP/HBP
Evaporating temperature range	°C	-30 to 10
Voltage range	V/Hz	LBP: 187 - 254 /50
		LBP: 198 - 254 /60
		HBP: 198 - 254 /50
Motor type		RSIR/CSIR
Max. ambient temperature	°C	43
Comp. cooling at ambient temp.	32°C	LBP: S
		HBP: F ₂
	38°C	LBP: S
		HBP: F ₂
43°C	LBP: S	
	HBP: F ₂	



- S = Static cooling normally sufficient
- O = Oil cooling
- F₁ = Fan cooling 1.5 m/s
(compressor compartment temperature equal to ambient temperature)
- F₂ = Fan cooling 3.0 m/s necessary

Design

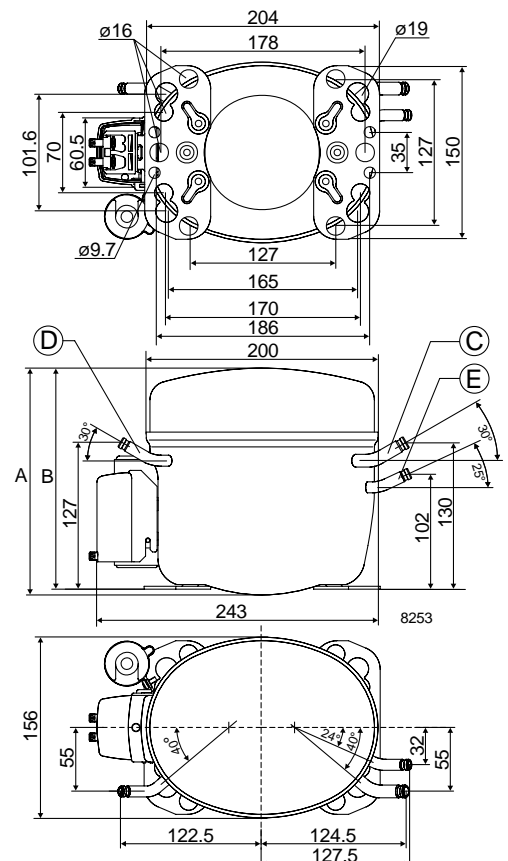
Displacement	cm ³	6.23
Oil quantity	cm ³	450
Maximum refrigerant charge	g	900
Free gas vol. in compressor	cm ³	1350
Weight without electrical equipment	kg	10.6

Motor

Motor size	watt	150
LRA (rated after 4 sec. UL984) LST/HST	A	5.8/7.5
Cut-in current LST/HST	A	10.5/7.5
Resistance, main and start winding (25°C)	Ω	12.6/12.4
Approvals		EN 60335-2-34

Dimensions

Height	mm	A	196
		B	191
Suction connector	location/I.D. mm	C	8.2 ±0.09
Process connector	location/I.D. mm	D	6.2 ±0.09
Discharge connector	location/I.D. mm	E	6.2 ±0.09
Compressors on a pallet	pcs.		80



Capacity (EN 12900/CECOMAF)

watt

Evap. temp in °C	-30	-25	-23.3	-20	-15	-10	-5	0	5	7.2	10
FR6G, 50Hz	47.7	83.3	96.5	124	171	226	290	365	452	494	552
FR6G, 60Hz	50.6	92.5	108	141	199	266					

Capacity (ASHRAE)

watt

Evap. temp in °C	-30	-25	-23.3	-20	-15	-10	-5	0	5	7.2	10
FR6G, 50Hz	58.9	103	119	153	211	279	359	452	561	614	687
FR6G, 60Hz	62.4	114	134	175	246	329					

Power consumption

watt

Evap. temp in °C	-30	-25	-23.3	-20	-15	-10	-5	0	5	7.2	10
FR6G, 50Hz	91.3	109	115	129	149	172	194	218	241	251	264
FR6G, 60Hz	94.8	119	127	144	170	197					

Current consumption

A

Evap. temp in °C	-30	-25	-23.3	-20	-15	-10	-5	0	5	7.2	10
FR6G, 50Hz	0.79	0.85	0.87	0.91	0.98	1.06	1.14	1.23	1.33	1.37	1.43
FR6G, 60Hz	0.69	0.77	0.80	0.86	0.97	1.09					

COP (EN 12900/CECOMAF)

W/W

Evap. temp in °C	-30	-25	-23.3	-20	-15	-10	-5	0	5	7.2	10
FR6G, 50Hz	0.52	0.76	0.84	0.96	1.14	1.32	1.49	1.68	1.88	1.97	2.09
FR6G, 60Hz	0.53	0.78	0.85	0.98	1.17	1.35					

COP (ASHRAE)

W/W

Evap. temp in °C	-30	-25	-23.3	-20	-15	-10	-5	0	5	7.2	10
FR6G, 50Hz	0.64	0.94	1.03	1.19	1.41	1.63	1.85	2.08	2.33	2.44	2.60
FR6G, 60Hz	0.66	0.96	1.05	1.21	1.44	1.67					

Test conditions	EN 12900/CECOMAF	ASHRAE
Condensing temperature	55°C	55°C
Ambient and suction gas temp.	32°C	32°C
Liquid temperature	55°C	32°C
50Hz: Fan cooling $F_{2, 220V}$		
60Hz: Fan cooling $F_{2, 220V}$		

Accessories

Devices	Fig.	FR6G	
PTC starting device	6.3 mm spades 4.8 mm spades	a1	103N0011 103N0018
Starting relay	a2	117U6000	
Cover	b	103N2010	
Starting capacitor 80 µF	c	117U5015	
Cord relief	d	103N1010	
Protection screen for PTC	g	103N0476	
Mounting accessories			
Bolt joint for one compressor		118-1917	
Bolt joint in quantities		118-1918	
Snap-on in quantities		118-1919	

